

Choosing a Cochlear™ Nucleus® Sound Processor










Hear Your Way

Whether your patient prefers the latest behind-the-ear technology or a discreet off-the-ear sound processor, Cochlear has solutions to optimise their hearing outcomes.

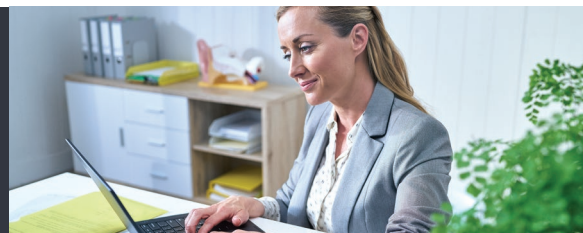
Cochlear's research has shown that some patients are comfortable controlling the settings on their sound processor, while others simply want to put their device on and forget about it. Some prefer a sound processor that sits on the ear, while others prefer a more discreet off-the-ear solution.¹

Whichever device they choose, you can be sure that SmartSound® iQ with SCAN and dual microphone directionality can help your patients hear their best.²

In addition to clinical factors, when choosing a sound processor your patient and their family may want to consider other lifestyle needs – this guide provides you with summary information to help support their decision making process.

COMMON FEATURES		
 Nucleus 7 Sound Processor (CPI000)	 SMARTSOUND IQ WITH SCAN	 Nucleus Kanso Sound Processor (CP950)
The first and only Made for iPhone cochlear implant sound processor ³	 DUAL MICROPHONES	The first and only dual microphone off-the-ear sound processor
Nucleus® Smart App for iPhone and Android™	 DUST AND SPLASHPROOF	CR230 Remote Assistant
Lightest and smallest behind-the-ear sound processor ⁴	 WATERPROOF WITH AQUA+	Lightest and smallest off-the-ear sound processor ⁴
Six colours	 COMPATIBLE WITH TRUE WIRELESS™ DEVICES	Eight colours
Disposable and rechargeable batteries	 REMOTE CONTROL	Disposable batteries
Offers Hybrid™ Hearing with acoustic component	 RETENTION ACCESSORIES	Hybrid Hearing not available

Points to consider when helping your patients choose their Cochlear Nucleus Sound Processor



With the Nucleus® 7 and Nucleus Kanso® Sound Processors, you can help your patients choose the option that best suits them.

	Nucleus 7 Sound Processor	Nucleus Kanso Sound Processor
My patient doesn't want anything on their ear	—	✓✓
My patient wants to remove background noise with ForwardFocus	✓✓	—
My patient wears glasses all day	✓	✓✓
My patient regularly wears a hat or helmet	✓✓	✓
My patient wants to fine tune their settings with a compatible smartphone	✓✓	—
My patient wants to stream movies, music and phone calls directly to their sound processor	✓✓	✓
My patient prefers or requires rechargeable batteries	✓✓	—
My patient needs to use an FM system at school	✓✓	✓
My patient would like a choice of retention accessories	✓✓	✓✓

✓✓ Designed for ✓ Suitable for — Not suitable

Please contact your local Cochlear representative if you require further support or for more information visit: www.cochlear.com

References:

1. Cochlear Limited. Developing communication platforms/feature set, internal market research. 2014, Dec; Data on file.
2. Mauger SJ, Warren C, Knight M, Goorevich M, Nel E. Clinical evaluation of the Nucleus 6 cochlear implant system: performance improvements with SmartSound iQ. International Journal of Audiology. 2014, Aug; 53(8): 564-576. [Sponsored by Cochlear].
3. Apple Inc. 'Compatible hearing devices' [Internet]. Apple support. 2017 [cited 24 February 2017]. Available from: <https://support.apple.com/en-au/HT201466#compatible>.
4. Cochlear Limited. D1190805. CP1000 Processor Size Comparison. 2019, Apr; Data on file.

Please seek advice from your health professional about treatments for hearing loss. Outcomes may vary, and your health professional will advise you about the factors which could affect your outcome. Always read the instructions for use. Not all products are available in all countries. Please contact your local Cochlear representative for product information.

The Nucleus 7 Sound Processor with Aqua+ and Aqua+ Coil is water resistant to level IP68 of the International Standard IEC60529 when you use a Cochlear Standard Rechargeable Battery Module or Cochlear Compact Rechargeable Battery Module. The Kanso Sound Processor with Aqua+ is water resistant to level IP68 of the International Standard IEC60529 when used with LR44 alkaline or nickel metal hydride disposable batteries. Refer to the relevant User Guide for more information.

The Cochlear Nucleus Smart App is available on App Store and Google Play. The Cochlear Nucleus 7 Sound Processor is compatible with Apple and Android devices, for compatibility information visit www.cochlear.com/compatibility.

Apple, the Apple logo, FaceTime, Made for iPad logo, Made for iPhone logo, Made for iPod logo, iPhone, iPad Pro, iPad Air, iPad mini, iPad and iPod touch are trademarks of Apple Inc., registered in the U.S. and other countries. App Store is a service mark of Apple Inc., registered in the U.S. and other countries.

Android, Google Play and the Google Play logo are trademarks of Google LLC. The Android robot is reproduced or modified from work created and shared by Google and used according to terms described in the Creative Commons 3.0 Attribution License.

Cochlear, 科利耳, コクレア, 코클리어, Hear now. And always, Nucleus, Kanso, Advance Off-Style, AutoNRT, Contour Advance, Custom Sound, Freedom, Hybrid, NRT, SmartSound, True Wireless, the elliptical logo, and marks bearing an ® or ™ symbol, are either trademarks or registered trademarks of Cochlear Limited (unless otherwise noted).