

▶ OTOLOGY, AUDITORY IMPLANTS, SKULL BASE AND ENDOSCOPIC

DISSECTION COURSE PARIS - FRANCE

13th/15th June 2018

- ▶ OTOLOGY, AUDITORY IMPLANTS AND SKULL BASE SURGERY DEPARTMENT
PITIÉ-SALPETRIÈRE HOSPITAL – PARIS - FRANCE
- ▶ INSTITUTE OF ANATOMY, UFR BIOMEDICALE «SAINTS-PERES»

Course directors

- ▶ *Olivier STERKERS, MD, PhD*
- ▶ *Daniele BERNARDESCHI, MD, PhD*

Collaborators

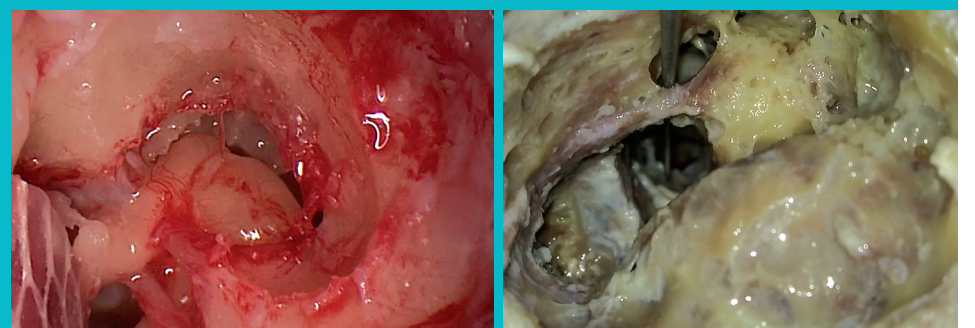
Hassan CHELLY, MD
Isabelle MOSNIER, MD
Yann NGUYEN, MD, PhD
And the department of Anatomy
of "Xavier-Bichat" university
Christian VACHER, MD, PhD

International guest

Livio PRESUTTI, MD (Modena, Italy)

Location

- ▶ **Institute of anatomy "Saints-Pères"**
45, rue des Saints-Pères – 75006 - Paris
(20 dissection stations for 20 participants:
each participant will be provided
With 3 half heads for the whole workshop)
FEES: 1300 €
- ▶ **Informations:** daniele.bernardeschi@aphp.fr



Our Partners



▶ Program schedule

Wednesday 13th June 2018

8h00 Meeting at University of medicine « Saint-Pères »

13h00-14h00 *Lunch break*

8h15-9h30 Anatomical and surgical landmarks

14h00-17h30 Dissection

9h30 Starting dissection

SURGICAL ANATOMY

- Closure of the external auditory canal
- Anatomy of the middle ear
- Dissection of all mastoid cells
- Skeletonization of sigmoid sinus
- Skeletonization of the dura and endolymphatic sac

- Lowering the facial ridge
- Labyrinthectomy
- Opening of the vestibule, identification of the jugular bulb
- Internal auditory canal
- Opening of the cochlea and identification of internal carotid artery

Thursday 14th June 2018

8h00 Meeting at University of medicine « Saint-Pères »

13h00-14h30 *Lunch break*

8h15-9h30 Anatomical and surgical landmarks

14h30-17h30 Dissection

9h30 Starting dissection

AUDITORY IMPLANTS

- Positioning of SOPHONO ALPHA 2 implant
- Mastoidectomy – Posterior tympanotomy
- Identification of the round window : Insertion of an ADVANCED BIONICS, COCHLEAR, MEDEL and OTICON arrays
- Positioning of middle ear implant VIBRANT SOUNDBRIDGE et BONEBRIDGE MED-EL

- Positioning of BAHA COCHLEAR and PONTO OTICON
- Translabyrinthine approach
- Transcochlear approach

Friday 15th June 2018

8h00 Meeting at University of medicine « Saint-Pères »

13h00-14h30 *Lunch break*

8h15-9h30 Anatomical and surgical recall

14h30-17h30 Dissection

9h30 Starting dissection

ENDOSCOPIC TEMPORAL BONE DISSECTION

- Stapedectomy
- Ossiculoplasty
- Canal-wall-down mastoidectomy
- Mastoid obliteration technique

LATERAL SKULL BASE APPROACHES

- Retrosigmoid approach
- Middle cranial fossa approach
- Combined retrosigmoid/middle cranial fossa approach
- Infratemporal approach type A